

04:45

04:46

04:47

04:48

04:49

640 Hz

660

680

700

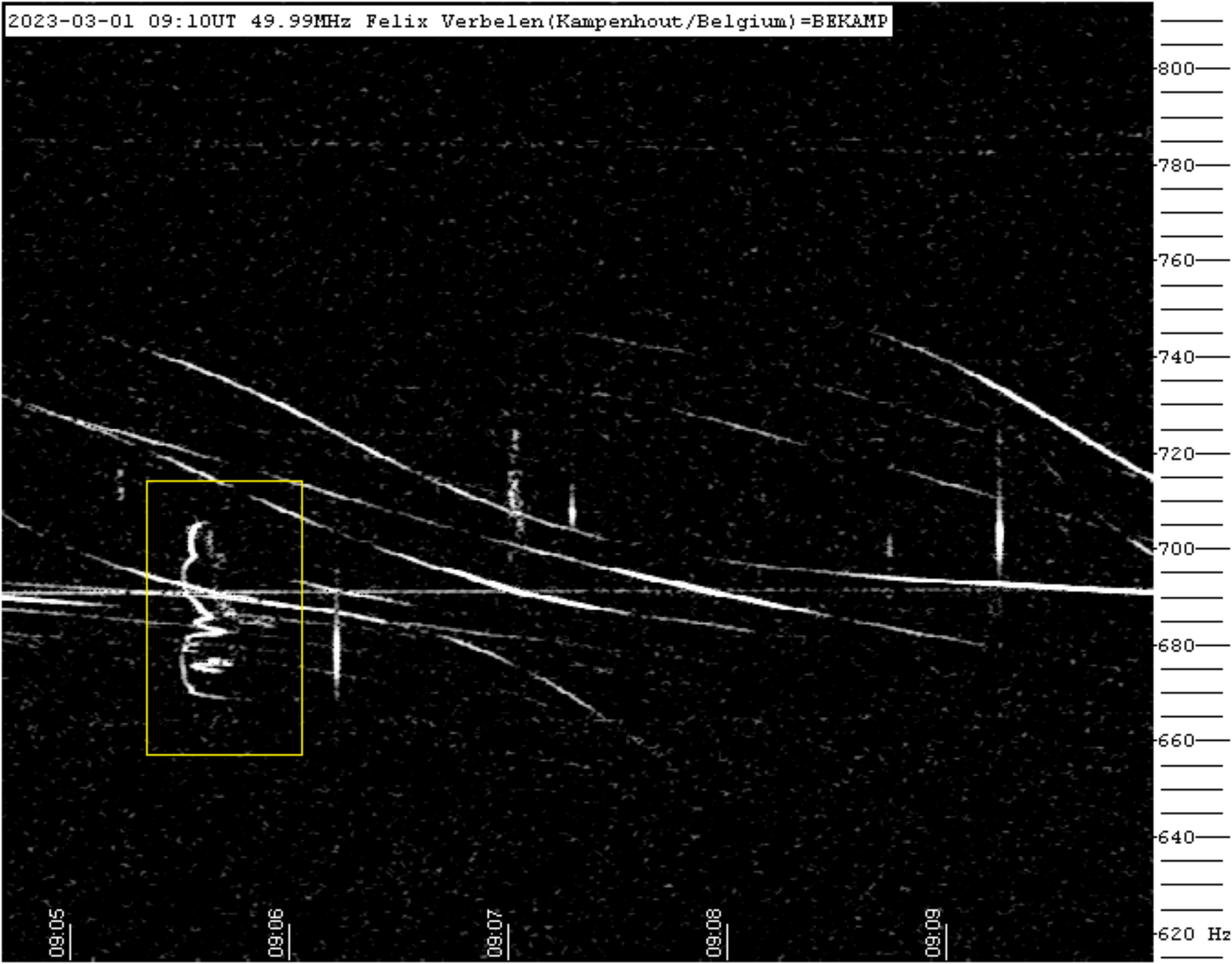
720

740

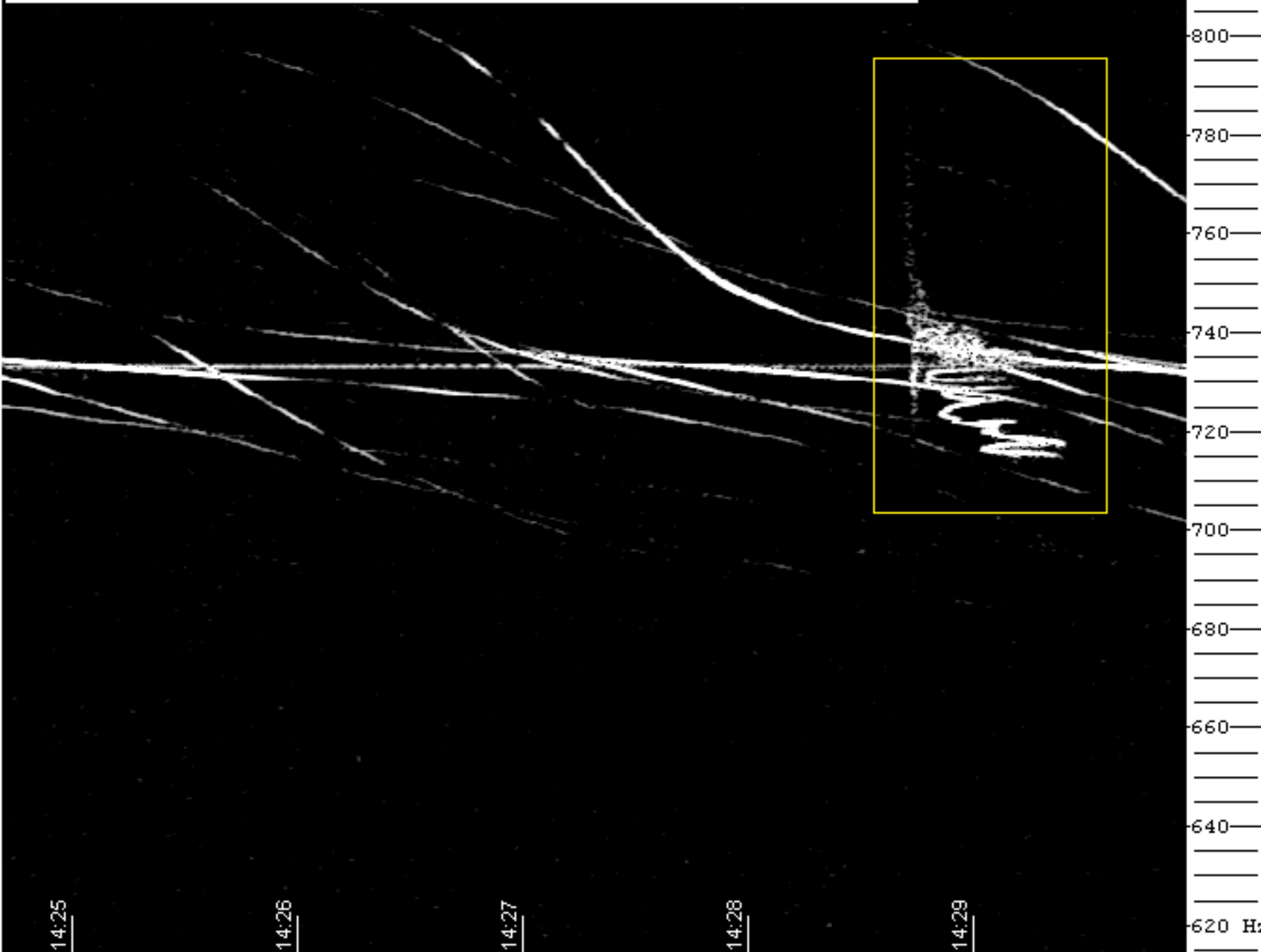
760

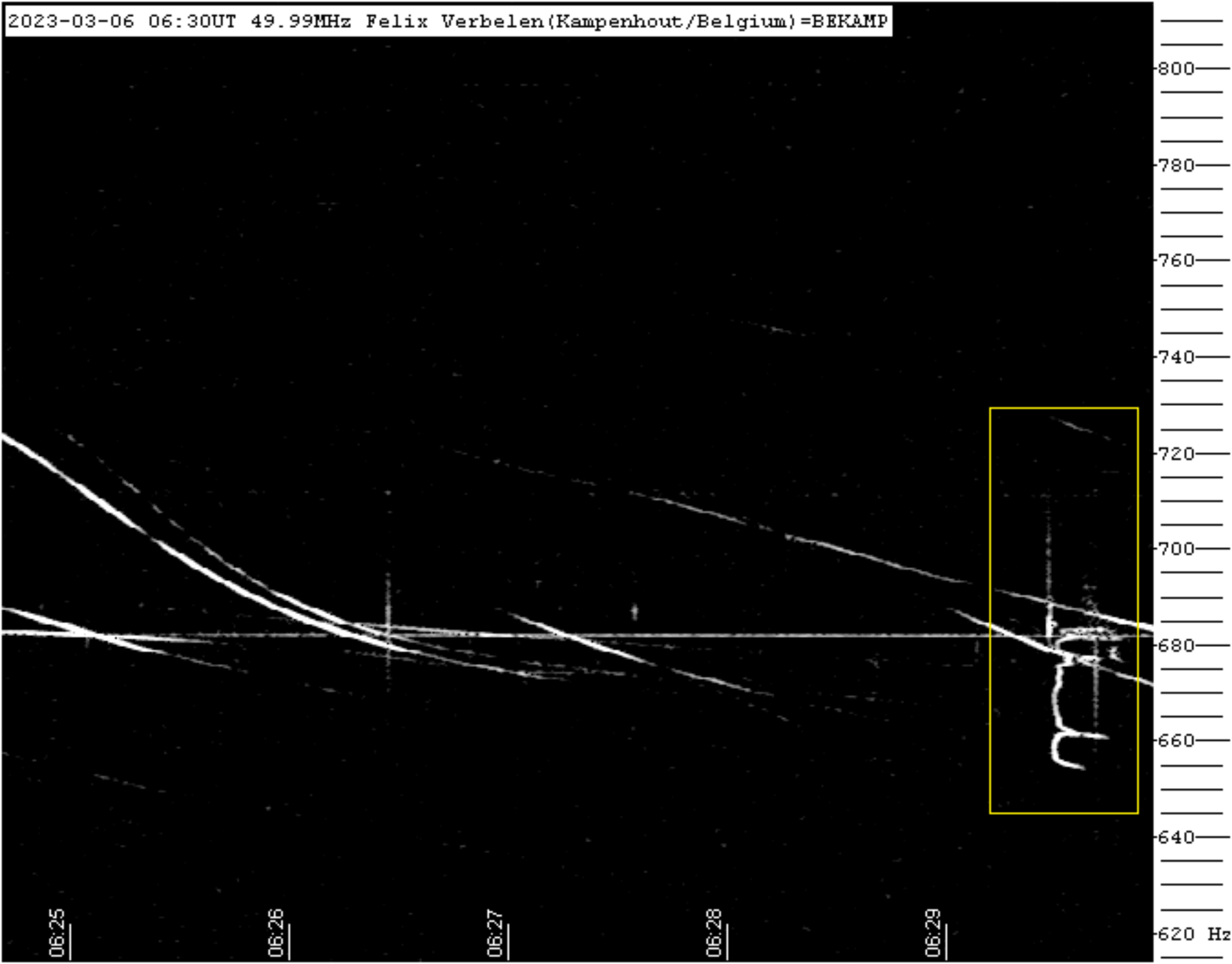
780

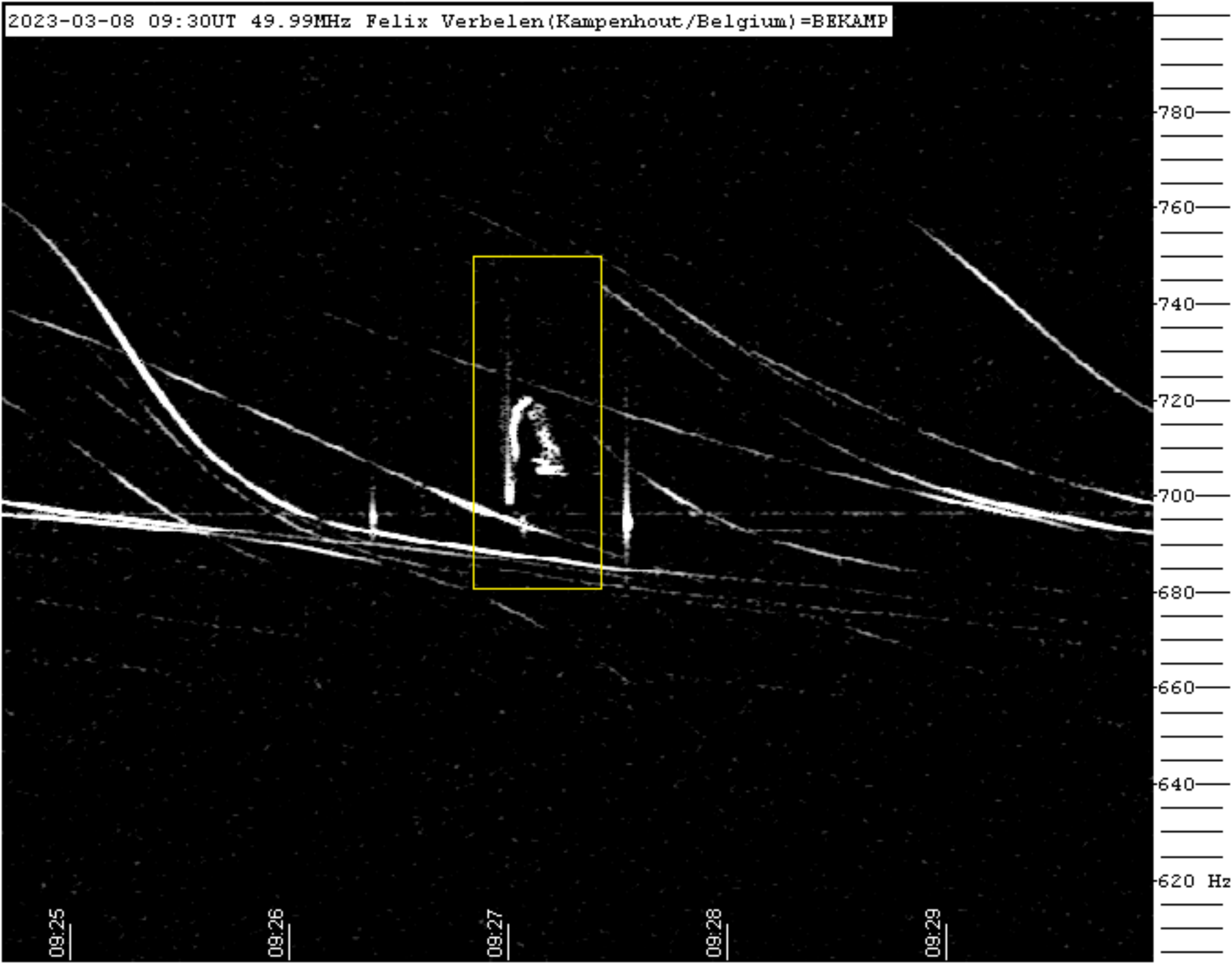
800











09:25

09:26

09:27

09:28

09:29

780

760

740

720

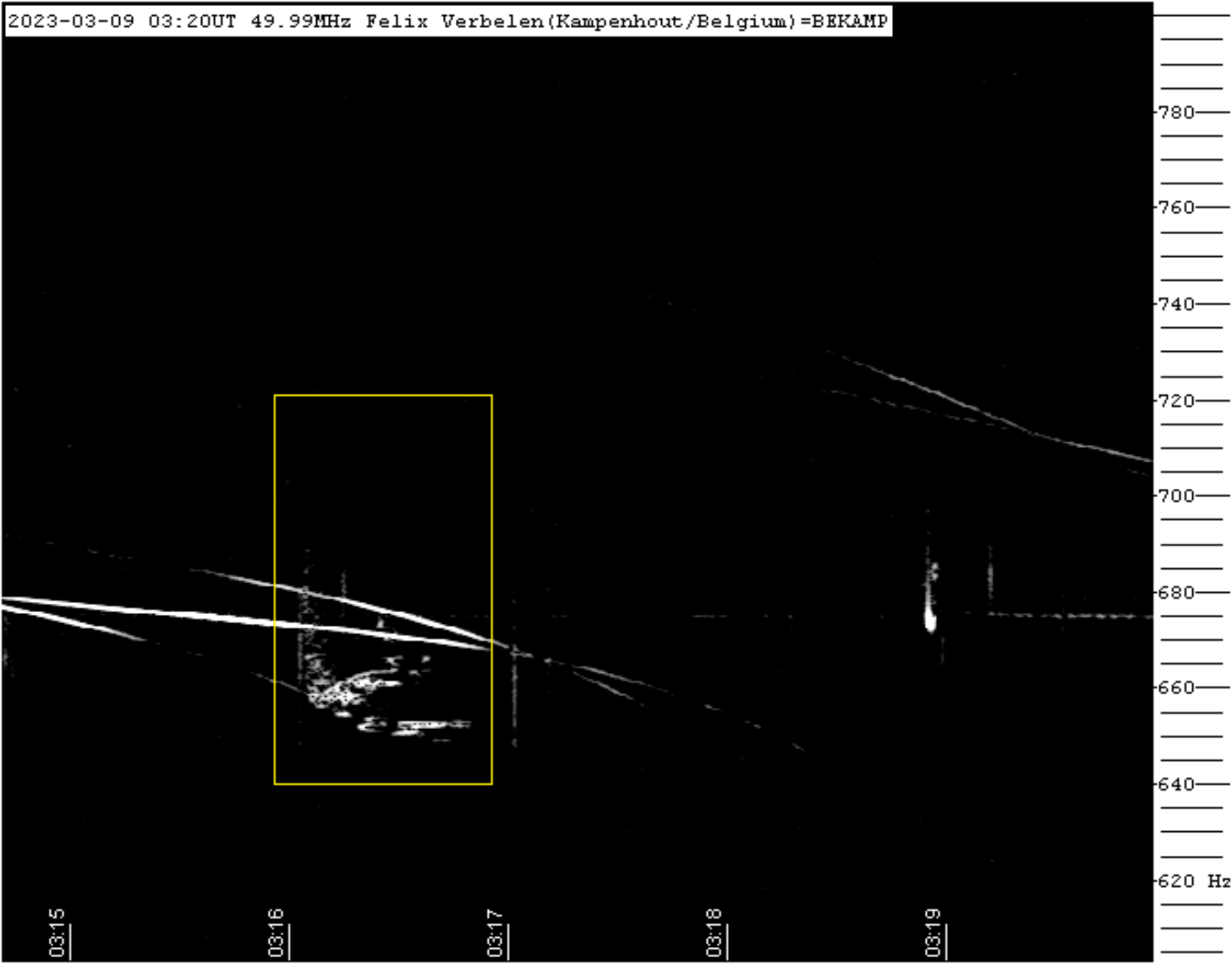
700

680

660

640

620 Hz



03:15

03:16

03:17

03:18

03:19

780

760

740

720

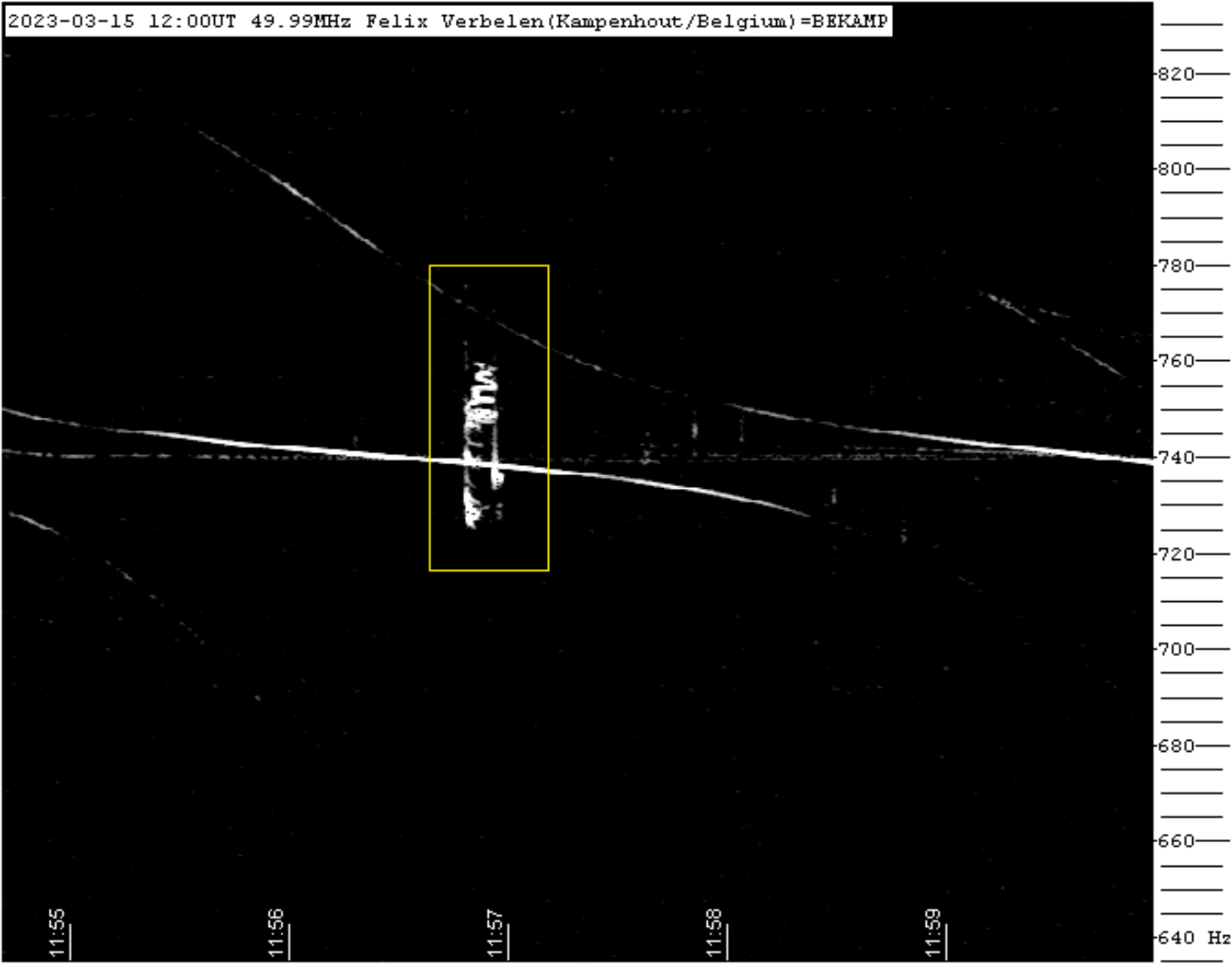
700

680

660

640

620 Hz



11:55

11:56

11:57

11:58

11:59

640 Hz

660

680

700

720

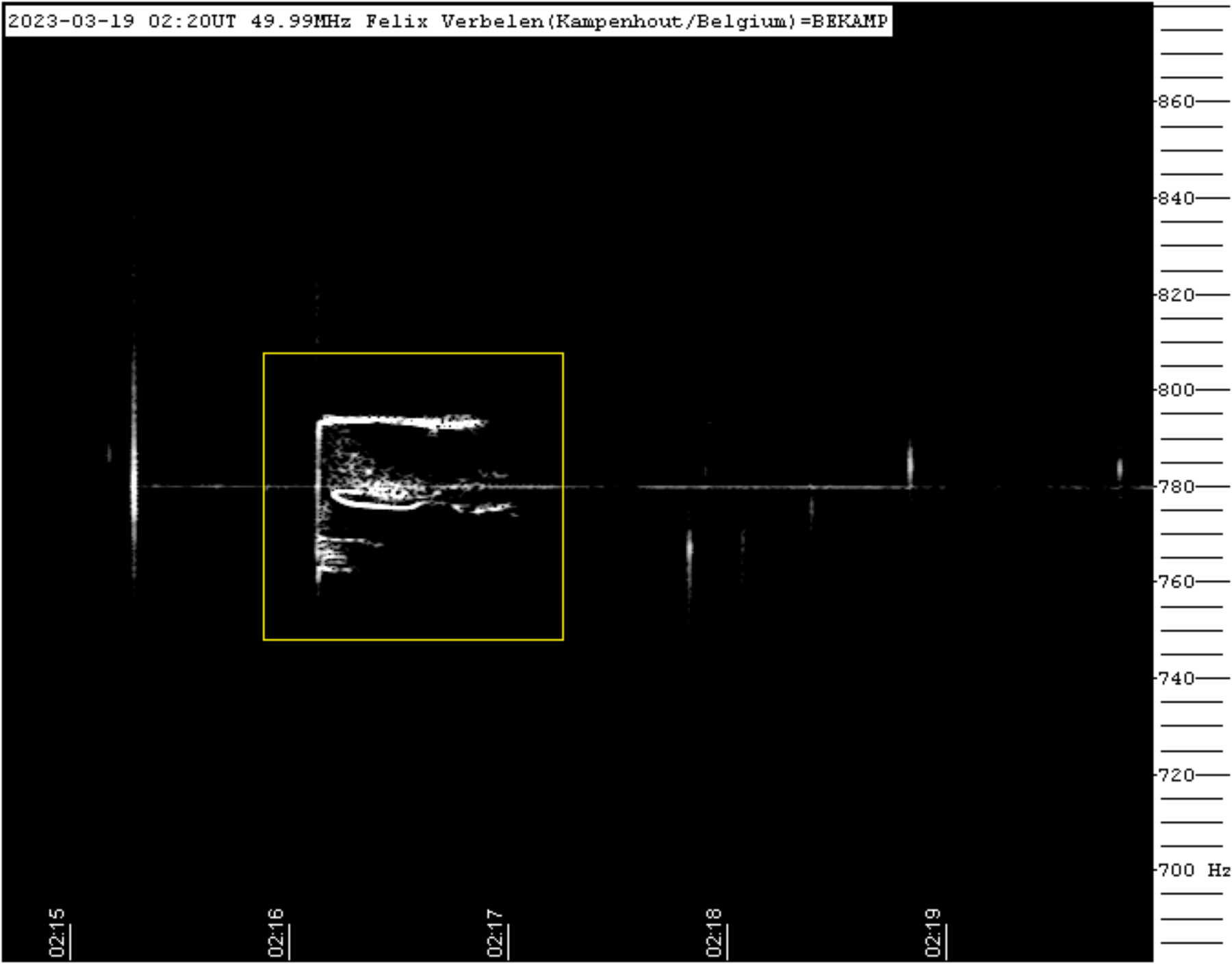
740

760

780

800

820



02:15

02:16

02:17

02:18

02:19

700 Hz

720

740

760

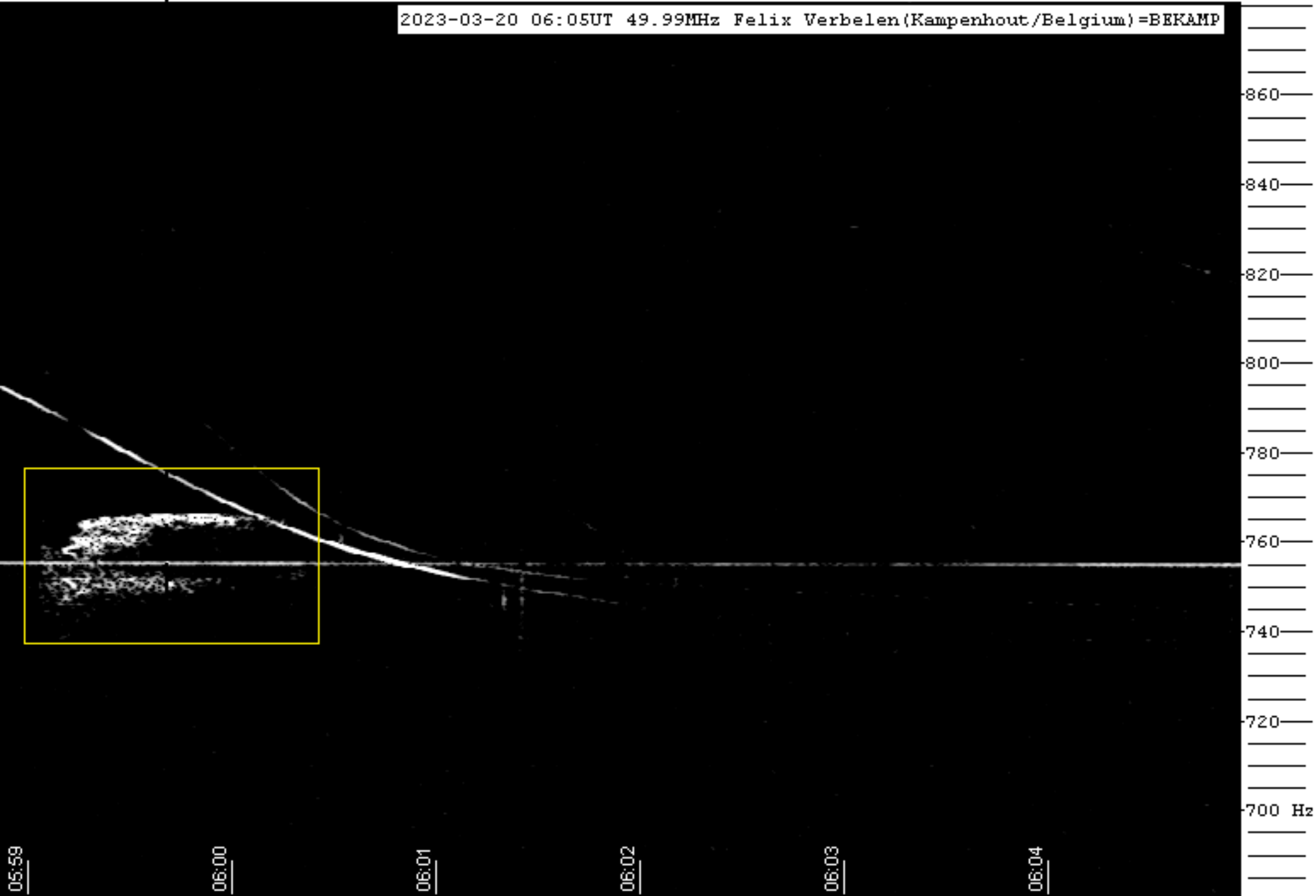
780

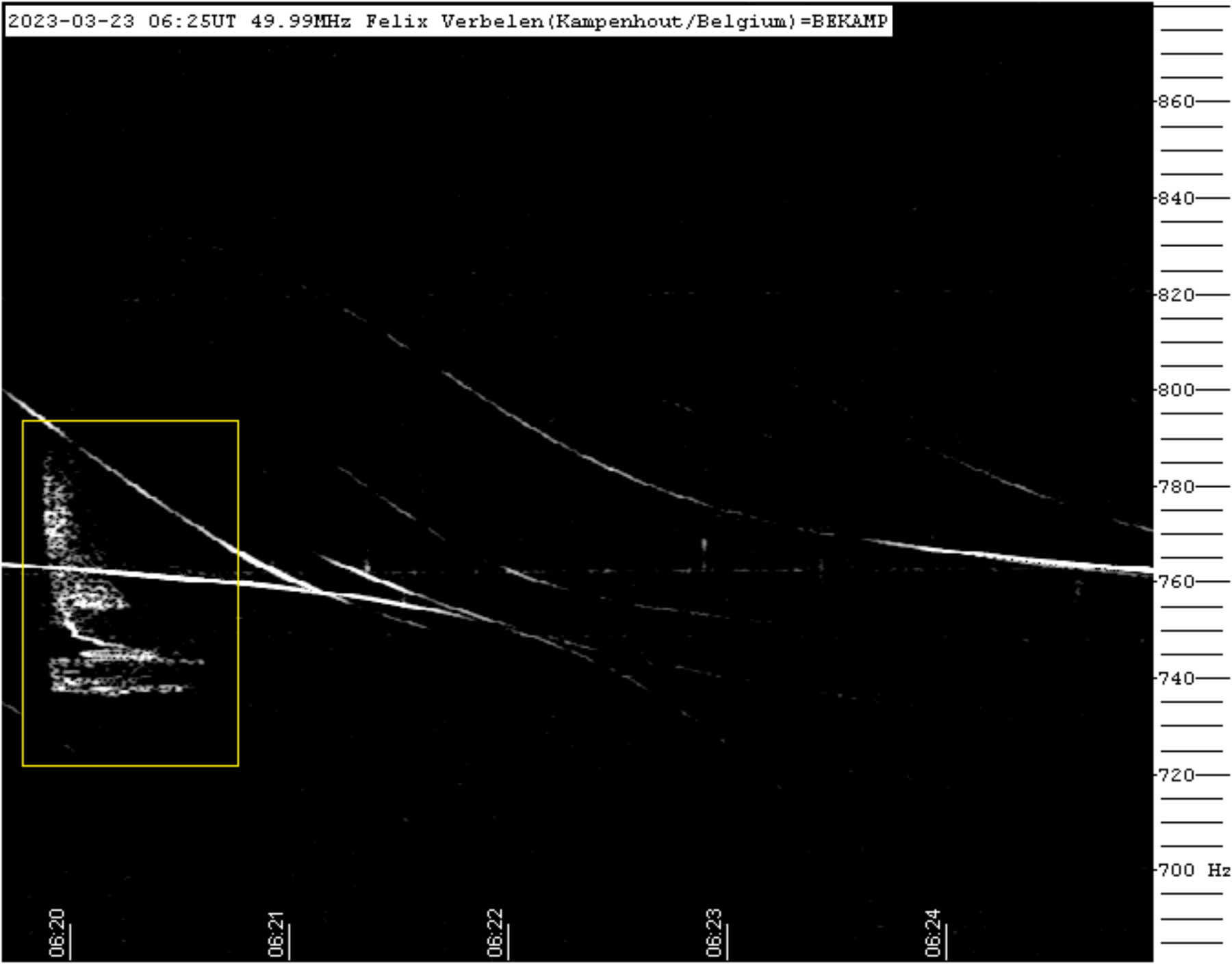
800

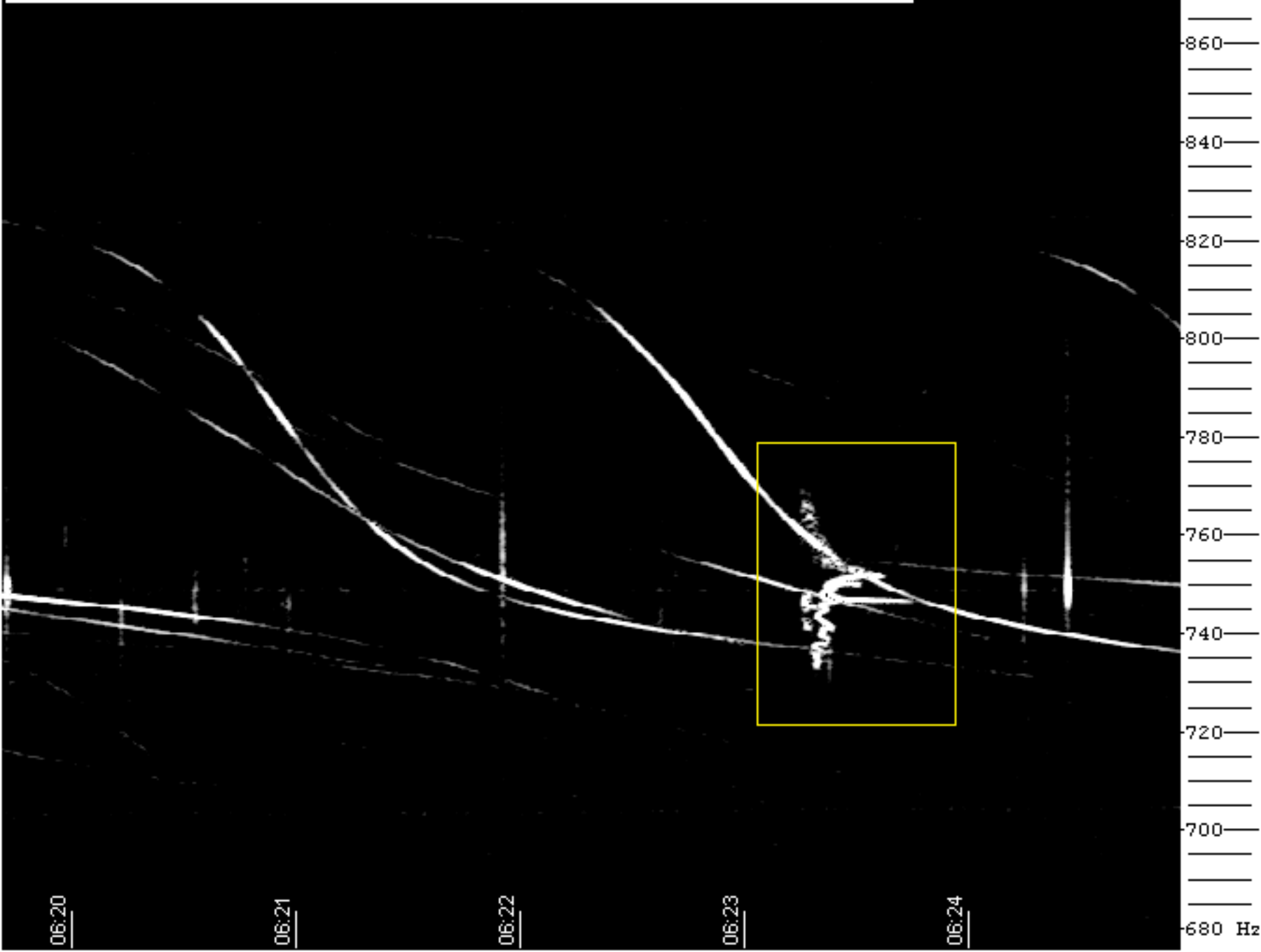
820

840

860







860
840
820
800
780
760
740
720
700
680 Hz

Wn

02:45

02:46

02:47

02:48

02:49

